

# Gloucester Education Foundation

Annual Report 2012





*A nonprofit organization dedicated to making Gloucester one of the five best school districts in Massachusetts.*

## 2012 Board of Directors

Maggie Rosa, *President*  
 Christine L. McGrath, *Vice President*  
 David A. Bernard, CPA, *Treasurer*  
 Robert W. Cunningham, *Clerk*  
 Leora Ulrich, *Recording Secretary*  
 Sarah Grow  
 Eric Kreilick  
 Beth Morris  
 Kathleen Purdy  
 Joe Rosa  
 John Sarrouf  
 Ed Shoucair  
 Jochem Struppe

## Community Council

Jennifer Goulart Amero	Dr. Robert Jedrey
Jim Barker	Fred Johnson
Jan Bell	Marietta Lynch
Kathleen Clancy	David Marsh
Natalie Daley	Mark Murray-Brown
Martin Del Vecchio	Stevie Neal
Jim Destino	Beebe Nelson
John Doyle	Ruth Pino
Mary Kay Dyer	David Rhineland
Robert Gillis	Val Somers
Jon Hardy	David J. Sudbay
Robert Heineman	Richard Weiss

## Advisors

Dr. Richard Safier, *Superintendent, Gloucester Public School District*  
 Carolyn A. Kirk, *Mayor, City of Gloucester*  
 Jackie Hardy, *President, Gloucester City Council*  
 Jonathan Pope, *Chair, Gloucester School Committee*  
 Val Gilman, *Gloucester School Committee Liaison*

## President's Message

After serving for five years as the Executive Director of GEF, I was elected president in January 2012. I am humbled and proud to be leading this fine organization whose mission I so strongly endorse. For my first *President's Message* I want to share my reasons for supporting the Gloucester Education Foundation.

- ***The cost of providing education services has steadily increased while funding has remained level or even shrunk.***

Our city struggles to stretch tax dollars to provide essential safety services, meet infrastructure challenges, and educate our children. This has a negative impact on the district's ability to invest in supplies, improved technologies and teaching staff. GEF's targeted financial contributions and volunteer efforts make a real difference.

- ***I would like today's students to have the same educational opportunities I had.***

I was fortunate to receive all of my academic education (elementary through post-graduate school) at almost no cost. This is not the case today – it costs to play sports; it costs to play music; and it costs to do many activities that I took for granted. GEF support of extra-curricular programs helps preserve programs and keep the cost to families low.

- ***An increased level of community participation means broader opportunities for students.***

The founders of GEF recognized that by tapping the interests, expertise, and generosity of the community GEF could bring students innovative and hands-on experiences that are unique to Gloucester. The expanding GEF schedule of programs funded is testament to the validity of this approach.

- ***The many dedicated and innovative staff members in our schools deserve support.***

A former outsider to the education process in Gloucester, I have learned over the last five years that the district has many dedicated and innovative staff members. These educators work hard and think creatively to improve the learning environment for their students. GEF, through the generous support of donors, can help these teachers in their efforts.

I'm proud of GEF's record of achievement. We have brought the state of the art Birdseye-Hammond Science, Technology and Engineering (STE) Center to the O'Maley Middle School, the Physics through Robotics curriculum to GHS, and the Summer Literacy programs to the elementary schools, to list just a few accomplishments.

All of this has been made possible by generous individuals, businesses, and foundations – YOU. I believe that your reasons for supporting GEF are aligned with my own. So many of you have been consistent in your support; we truly value your generosity.

I do hope that you will help us continue our efforts. Please give as generously as you can to help support our efforts to make Gloucester one of the five best school districts in Massachusetts.

## Thank you



**Maggie Rosa,**  
*President,*  
*Gloucester*  
*Education*  
*Foundation*

## Thank You Ed Shoucair

*GEF's founder and visionary leader, Ed Shoucair, has stepped down from the organization's presidency after more than five years at the helm. Ed's commitment and steadfast belief that the community plays an essential role in the education of Gloucester's students made GEF's accomplishments to date possible. Without him, many programs you will read about in this annual report simply would not exist. On behalf of all GEF donors and volunteers, the GEF Board of Directors thanks Ed for his amazing service. We look forward to his continued involvement in new capacities.*



**Ed Shoucair**

# Year 6 Programs Funded by GEF

## GLOUCESTER HIGH SCHOOL

- Extended-Day Advisor Stipends\*
  - Docksidiers Band Director
  - Summer Band Director
  - Chorus Director
  - School Literary/Arts Magazine "Elicitor"
  - Theater Program
    - Drama Director
    - Statewide Drama Festival
    - Spring Musical
  - National Honor Society
  - Community Service
  - Student Council
  - Chess Club
- Art History Curriculum Development
- AP Prep Summer Programs
  - English
  - Economics
  - Chemistry
  - Social Studies
- Marketing/DECA Program
- **Equipment for Physics**
- **Equipment for Physics of Robotics**
- **CAD Software for Vocational Education**
- **Safety Improvements in Cabinet Design & Innovation**
- **Supplies for Arts (clay, paints, photography)**
- **Chemistry with iPads\***
- **Repairs of Music Equipment**

## O'MALEY MIDDLE SCHOOL

- Science, Technology & Engineering Center
  - Supplies & Materials
  - Repairs to Weather Station Equipment
  - **Wind Cars**
  - Wind Turbine\*
- Field Studies on Mill River Salt Marsh
- Summer Science Program at MIT and Maritime Gloucester
- Extended-Day Programs
  - Music
  - World Languages
    - German
    - Italian
    - Spanish
  - CAD Boat Hull Design
  - Robotics
  - Flight Simulation
  - Math Club
  - Extended-Day Program Coordinator

## ELEMENTARY SCHOOLS

- District-wide Summer Literacy Program\*
- Artist-in-Residence Theater Programs\*
- Grades K-1 Stone Soup Arts & Literacy
- Extended-Day Music Program (stipends, transportation & sheet music)
- **Grade K -2 STEM Curriculum Development and Professional Development**
- **Grade 2 Hands-On Science - Tidal Pools**
- **Grade 3 Hands-On Science - Mt Avalon Glacial Landscapes**
- **Grade 5 Hands-On Science - Red Rocks**
- **Grade 5 Hands-On Science - Tide Pools**
- **Grade 5 Hands-On Science - Dogtown Common – History & Biology**
- **Grade 5 Robotics Event**
- **Grade 5 Motorized LEGO® Cars at MIT**
- **Grade 5 West Parish Science Park**
- **Grade 5 Ballroom Dance**
- **Soundfield Systems in all kindergarten classrooms\***
- **Mini-grants (\$1000) to each school to be used as needed**
- **STEM Science Supplies and Equipment Repairs**
- **JoRide SPED Bicycles**
- **Art Explorations Textbooks and Supplies**

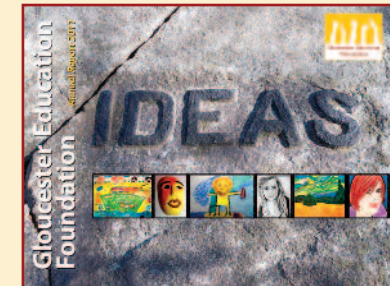
## DISTRICT-WIDE INITIATIVES

- Science, Technology & Engineering Coordinator/Curriculum Writer
- Math Specialist
- Grants Writer
- Arts Festival
- Transportation

Programs in red are new for the 2011-2012 school year.

\* Program featured in an article on pages 3-5.

*The colorful fish  
"swimming"  
throughout  
the report were created by  
West Parish School students.*





## Sound Amplification Systems Help Kindergartners Tune In

The youngest students learn by listening. It's how they learn to read. Therefore, it is essential for their success, today and in the future, that every student be able to hear their teacher clearly. That is why GEF has funded the installation of amplification systems in each of the district's 12 kindergarten classrooms.

**The hand-held device is great to use for student presentations. With it even the more tentative students find their "voices."**  
(See photo.)

Soundfield systems use wireless infrared technology to transmit the speaker's voice from the microphone to a receiving unit. The system then amplifies the audio signal and delivers it to strategically positioned audio speakers in the classroom. The teacher's voice is made louder and clearer for all students regardless of the classroom's poor acoustics and high ambient noise level.

Soundfield technology is proven to provide students

with an enhanced listening environment, better speech recognition and, therefore, an improved opportunity to learn. Teachers who have had hearing-impaired students in their classrooms requiring the use of soundfield systems confirmed the numerous teaching and learning benefits of the systems.

East Gloucester School kindergarten teacher Pam Jacobson explains, *"Using the system enables me to speak to my students in a soft voice, yet they seem more attuned to me when I read aloud and give oral directions."* Encouraged by positive reactions like this, GEF and the district plan to install the systems in all first grade classrooms in 2012. GEF is confident this significant investment will yield positive long-term results.

## Harnessing the Wind to Power Learning at O'Maley

Since 2007 GEF has supported and enhanced O'Maley's hands-on approach to science teaching. GEF has funded expert staffing, teacher training, curriculum development, and the Birdseye-Hammond Science, Technology and Engineering (STE) Center. Most recently, GEF helped O'Maley harness the power of the wind.

**Whoosh!**  
**265 8th graders also constructed and launched, first small scale models and then, fully functional wind-powered land vehicles in the fall of 2011.**  
(See photo.)

The wind turbine project began in 2010 growing out of a STE Center program in which students learned about wind and built hand-held windmills. Educators recognized that installing a wind turbine at O'Maley would both reduce the cost of energy and be a learning opportunity for the 8th graders. They involved students in the conceptualization of the project. Research led them to conclude that a vertical axis wind turbine would be ideal for installation at the school. This type of windmill is rugged, quiet, omni-directional, only

30 foot tall and, most importantly, works at lower wind speeds than the conventional windmill variety.

**The wind turbine has a wireless antenna that transmits data and to all O'Maley classes.** Math teachers use the data in graphing lessons, science teachers in weather studies, and the data contributes to special projects like the study of alternative energy.

A further benefit of the wind turbine is power generation. It's expected to generate 1.2 kilowatts of electricity every 1,000 hours. O'Maley students will be able to verify actual production and track the energy savings to the school.

The wind turbine delivers hands-on, real world, cross-curriculum learning opportunities. That's powerful!

### O'Maley's Birdseye-Hammond Science, Technology and Engineering Center

was established in 2009 through the *Sea Initiative* grant awarded to GEF to develop collaboration between MIT's Edgerton Center and the district. All O'Maley students use the center to do hands-on learning projects and 5th graders visit the center at least once each year.



Cape Ann Beacon

### Soundfield Installations

	rooms	students
Beeman	3	59
East Gloucester	2	39
Plum Cove	2	39
Veterans'	2	44
West Parish	3	69



## Theater Learning on Every Gloucester Stage

GEF dreams that someday students at every grade level, in every Gloucester school, will demonstrate their creativity and mastery of a subject by staging a performance.

To realize that dream GEF provides funding for theater professionals to work with the staff, students, and parent community in the elementary schools and help them put on a show. The results are inspiring. The productions get rave reviews and, just as importantly, with its strong focus on teacher training and volunteer development, this approach builds the capacity of the schools. Program coordinator John Sarrouf explains, "Having created a show from start to finish in collaboration, visiting artists feel more confident working in the schools with this age group and hopefully teachers and families feel more confident about taking on new projects." This year, a daring East Gloucester School rose to the challenge of Shakespeare! (See photo.)

While the artists-in-residence have worked primarily with older elementary students, the "Stone Soup" project led by local artists Lara Lepionka and Emily Sinagra is a kindergarten and first grade program. It involves the students in interpreting and dramatizing the beloved book by Marcia Brown. Nothing brings reading to life like, well, literally bringing it to life. One teacher commented in a post-program review, "I like that all modalities were used. Hearing, seeing, and doing keeps students engaged!" Students learn best when they are a part of the learning experience."

With confident and well-supported teachers, every GPSD stage is set for learning and creative expression.

### Seen On GPSD Stages this Year

GHS – *What I Want to Say But Never Will, Lockdown, Little Shop of Horrors*

O'Maley Middle School – *Willy Wonka, Jr.* \*

Beeman – *Wizard of Oz*

East Gloucester – *A Midsummer Night's Dream*

Plum Cove – *The Enchanted Oak*

West Parish – *1000 Channels and There's Still Nothing On*

\*not a GEF funded program

## GHS Chemistry Classes Flip for iPads

Since bursting onto the scene iPads have been transforming the use of technology in education. So when GHS chemistry teacher Tracy Lynn Lowthers made the case that with eleven iPads in her classroom she could provide more personalized instruction and encourage students to take more responsibility for their own learning, GEF agreed to support her efforts to "flip the classroom."

*Students are learning to properly use the internet for research. In the past, if a student did not see a word in the "index" of a textbook, they usually gave up. Today, they are beginning to understand the power they have at their fingertips.*

Students preview lectures and sample problems prior to classroom instruction time. Ms. Lowthers can then better individualize answers to students' questions and direct them to online resources that will address their needs. In class students work in pairs to create projects that demonstrate literacy skills and mastery of Massachusetts Science and Technology/Engineering Frameworks. Their work online often inspires classroom discussions that enliven the learning atmosphere.

Ms. Lowthers videotapes classes for students who have missed class or need additional time to comprehend

the subject matter. Students too have used the iPads to make instructional videos on proper laboratory techniques and other videos that demonstrate their knowledge of specific topics. Of course students have fun with the iPads (see photo) but they are also realizing that iPads are a powerful tool. Even more importantly, students are recognizing that they are responsible for their education and for utilizing these resources so they can reach their full potential.

This GEF grant is expanding the use of technology in the classroom in exciting ways. Ms. Lowthers said, "This has been a non-stop building year!"

### flip the classroom...

use the internet to provide pre-classroom lectures and the classroom to embed that knowledge through exercises, coaching and discussion.





Allegra Boverman, Gloucester Daily Times



## Flexible Summer Literacy Program Maintains Learning Momentum

The GEF Summer Literacy program strives to make sure summer break isn't a break from learning. By mixing quiet moments with a good book (see photo) and group activities, it provides students fun ways to stay engaged with reading, writing, and artistic expression while school's out.

Since 2009 GEF has made funds available to each of the district's elementary schools to create summer programs that meet the needs and interests of their students. The schools have embraced this approach hosting a variety of projects that all share a goal of strengthening literacy.

Plum Cove Principal Tammy Morgan explains, *"Our summer literacy program helps us to increase our students' reading comprehension and fluency skills.* Through the reading, writing, discussion, and dramatization of folktales, students are provided with a fun, motivating, and enriching way to better connect to literacy. Working together the students also build their social skills."

The flexibility of the grant program means schools can do what works for them. With its roof under repair, East Gloucester wasn't able to host a summer program. Instead they asked GEF if literacy funding could be used to support a student produced school newspaper. GEF enthusiastically agreed hoping the project might serve as a pilot for other schools interested in student journalism. The *EGS Gazette* (downloadable at the schools' website) features local and school news, movie and book reviews, and even a crossword puzzle. It's a great read.

Literacy is the key to academic success. GEF congratulations to all five schools on their engaging, literacy building programs.

School	Project focus	# of students (grade)
Beeman	writing and performing arts	60 – 75 (K-5)
East Gloucester	<i>EGS Gazette</i>	20-30 (4)
Plum Cove	folktales	20 (1-4)
Veterans'	Gloucester history	30 (K-5)
West Parish	vocabulary and story comprehension	45 (K-5)

## Preservation too is a Hallmark of GEF Funding

GEF is known for innovation. But to achieve our goal of making Gloucester one of the five best school districts in Massachusetts preservation is just as important. That's why *GEF devoted approximately \$90,000 in the last year to sustaining long-standing programs that the district could not otherwise afford.* Stipends for after school program advisors are a prime example.

Memories and friendships are made, skills developed, and college applications enhanced through participation in extracurricular activities. Beyond that, these activities provide an incentive for many students to stay engaged and be successful in academic pursuits. Clubs and organizations are so integral to our vision of the high school experience that we cannot imagine students having to do without them. But with shrinking budgets and growing demands to focus limited resources squarely on the classroom, district funding of these programs is far from certain.

GEF funds advisor stipends for GHS Band & Chorus, *The Elicitor*, DECA, Student Council, Chess Club, Community Service Club, National Honor Society and GHS Theater (see photo). Altogether hundreds of students are involved in these programs. It would be a shame to lose any of them.

**The 2011-2012 GHS Chess Club** competed in the North Shore Interscholastic Chess League playing games at home and away. They won the Cape Ann Cup defeating Rockport in a nail-biting tiebreaker. To cap off league season they got to test their skills against a nationally known and ranked, chess Grand Master. "The team is quiet about their achievements. They just love to play."

~ From notes by Zachary Roy,  
GHS Chess Club Advisor  
12 members

**The Elicitor** is an important outlet for the creativity of students at GHS. The print and online versions of *The Elicitor* provide a way of sharing that creativity with the community. Publication is a way of saying to students "your creativity and the hours you've spent giving shape to that creativity are valuable."

~ James Cook,  
*The Elicitor* Literary Magazine Advisor  
32 student contributors

## GEF Funding is Transformative

- Equipment and supplies purchases transform classrooms.
- Professional development transforms teaching.
- Innovative and hands-on curricula transform learning by making it fun and engaging.

### Reactions from educators

When students become engaged in learning their performance in school improves. GPSD Science Curriculum Writer, John Madama, reports that students who have participated in the GEF Summer Science program see at least a 1 grade, sometimes a 2 grade, jump in their science grades following year.

Principal Gregg Bach attributes East Gloucester School's increased Math MCAS scores to GEF-funded

districtwide curriculum upgrades along with the dedication and hard work of teachers and students. "Our teachers are excited by the progress they see, and are grateful for the GEF support of this important curriculum upgrade."

"The science programs you [GEF] support has led to students being more excited about science and prepared for the science MCAS which our students continue to excel in year after year." -- 5th grade teacher

"The changes you have made to our schools go deeper than what most people see.... the shyest child transforms into a confident young person" through the Mad Hot Ball.

"GEF sponsored field trips - history and biology of Dogtown, the glacial landscapes of Mount, mapping, tidal pool discovery and vernal pond adventures - inspire students to be stewards of their local ecosystems."



*GEF funded equipment and supplies to make the cabinetry shop safer and more productive.*



*The string program began just five years ago. Today band concerts regularly fill the stage with budding violinists.*



*Hands-on experiences in 5th grade prepare students for the expanding middle and high school robotics programs.*



*Wind Tunnel at MIT provides plenty of fun for girls (and boys too) at the Summer Science Program.*

*As I write this letter, my thoughts go to the diversity of programs sponsored by the Gloucester Education Foundation. The list, along with the opportunities for students, is vast. It includes: the Summer Reading Program, Instrumental Music, Ballroom Dancing, along with numerous field trips for Grades 2-5. There is support for the Physics of Robotics, the Art History Curriculum, DECA, and the Chess Club. For after-school programs, we can include World Languages, Art Club, Math Club, Robotics, Flight Simulation, and Computer Assisted Design. There is the Summer Science Program, the Mill River Salt Marsh exploration, STEM equipment repairs, and Advanced Engineering. Last, add the numerous GHS stipends.*

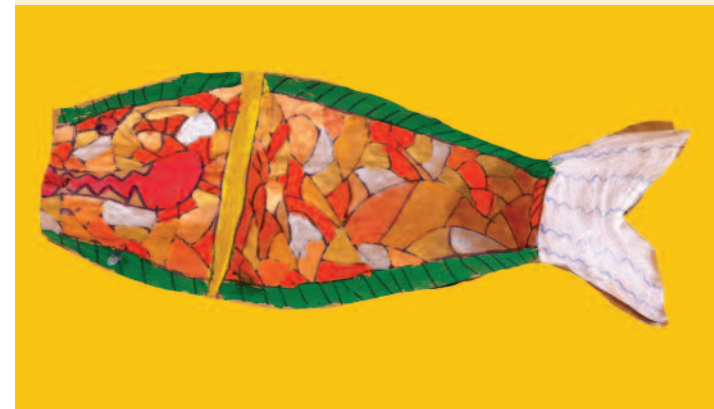


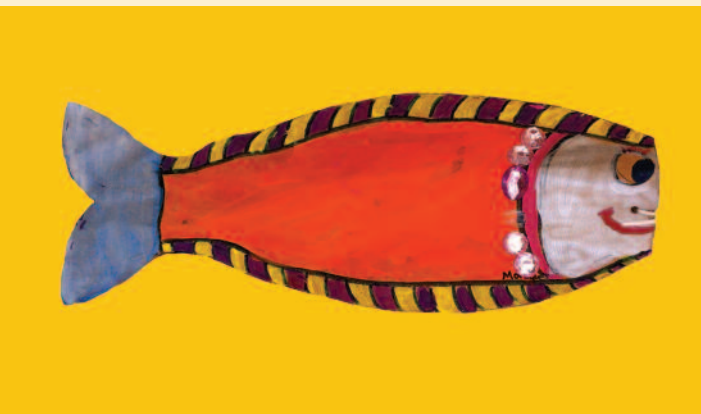
**Dr. Richard Safier,**  
Superintendent  
Gloucester Public  
School District

Gloucester Daily Times

*The above items and the requisite support for each speak to the Foundation's fulfillment of its mission, which is to contribute to an enriched and supportive learning environment. What that translates into, quite directly, are multiple opportunities for students to have a rich and varied education.*

*On behalf of the Gloucester School Committee, the staff, and most especially, the students of the Gloucester Public Schools, I extend profound thanks and appreciation to the Gloucester Education Foundation for the outstanding work that you do. I look forward to our continuing, collaborative efforts.*





## Notes on the Financials

### Support Remains High

Despite the continued tough economic times we are thrilled that support for GEF continues to remain high. The number of generous donors remained constant this year, with an ever-increasing number of people contributing for three or more years. Thank you to everybody.

Total expenses for 2011 are less than the total income due to the receipt of special grant funding that will allow us to hire a professional Executive Director (see below).

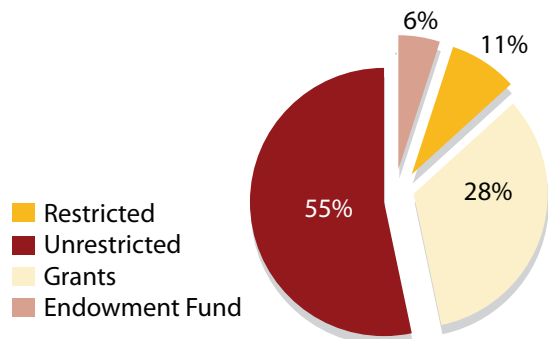
Increasing pressure on the district has resulted in more applications to GEF for program funding. All of the applications have high value and we would love to be able to sponsor them all. With your help we can do more. We are grateful for whatever support you are able to provide because it means that you care about the education of Gloucester's students.

### Funding Received for Professional Executive Director Position

GEF is pleased to announce that we have received a grant to fund the paid position of Executive Director. At the time of publication we are in the midst of interviewing candidates for this important position. One essential duty of the newly hired Executive Director will be to identify opportunities and develop grant applications. To date we have relied mostly upon the valiant efforts of volunteers for many of GEF's activities. As the organization and our ambitions for supporting the district grow, the need for additional help has become increasingly apparent. We are grateful to an anonymous foundation for recognizing this need and for providing funds for a two-year period to fill this important position.

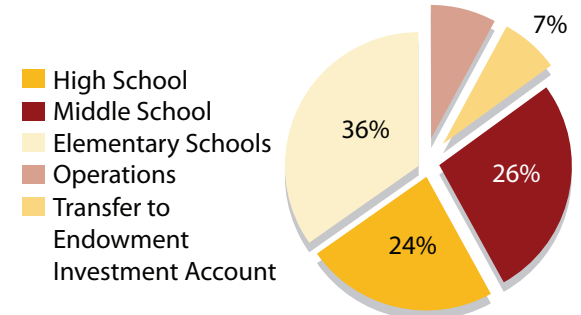
#### Revenue

Unrestricted	54.30%	\$143,324
Restricted	11.30%	\$29,965
Endowment Fund	5.90%	\$15,625
Grants	<u>28.40%</u>	<u>\$75,000</u>
<b>Total Income</b>	<b>99.90%</b>	<b>\$263,914</b>



#### Expenditures

High School	23.80%	\$52,000
Middle School	25.60%	\$56,000
Elementary Schools	36%	\$78,772
Transfer to Endowment Investment Account	7.10%	\$15,625
Operations	<u>7.30%</u>	<u>\$15,929</u>
<b>Total Expenses</b>	<b>99.90%</b>	<b>\$218,326</b>



### Endowment Fund

As of February 29, 2012 GEF's endowment fund stood at \$126,383. With Board approval, 5% of the endowment fund is transferred to the general fund each year. Steady growth of the endowment fund therefore boosts the amount available for giving each year and enhances the sustainability of programs even in tough economic times. We encourage you to consider contributing to this important fund.



# Valued Collaborations

## Alchemy of the Arts Series

We are delighted to acknowledge the wonderful support provided to us through the *Alchemy of the Arts* series, sponsored by the Serenitee Management Corporation, and held throughout the year at Alchemy Bistro on Duncan Street. This yearlong art showcase features work by local artists with a portion of any sales going to benefit the GPSD arts programs. The monthly gala openings provide a lovely way for supporters of GEF to mingle with the artists. In addition, each artist has donated a piece of art for a year-end gala auction. The first auction was held in December at Lat43. Be on the lookout for information on the 2012 event.

## Generous Gardeners – An Exciting New Fundraiser

Susan and Chuck Kelly, parents of two GHS graduates, have been generous supporters of GEF since its founding. Last year Susan approached GEF with a fundraising opportunity – a very special perennial plant sale with all of the plants donated by local gardening enthusiasts. The plant sale was a huge success raising more than \$2,000 for GEF. As a bonus, a few of the plants were used to beautify the area around the Administration Offices at Fuller.

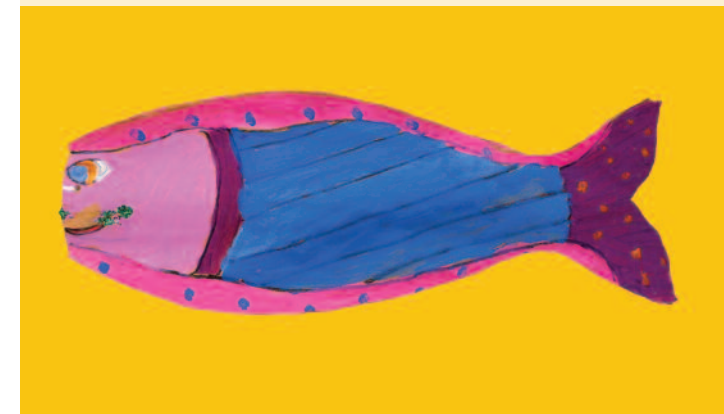
Susan and fellow master gardener Terese O’Connell are planning another Generous Gardener plant sale for Saturday, May 19 at Stage Fort Park. The plant sale is a great example of what can happen when individuals put their interests and talents to work for the benefit of the schools. GEF thanks them and couldn’t be more pleased that this grass roots initiative is growing into an annual event.

## Highlighting Our Business Donors

Gloucester businesses are known for their generosity to many worthy causes. We are grateful that so many financially support GEF’s efforts to make the Gloucester one of the five best districts in Massachusetts. We also appreciate the downtown businesses that showcase student artwork during the annual arts festival – they never seem to mind us coming in to hang the artwork. Please take note of the businesses that support GEF and be sure to thank them the next time you visit.

## Helping Us Spread the Word

The community’s awareness of GEF efforts would be significantly curtailed without the efforts of the *Cape Ann Beacon*, the *Gloucester Daily Times*, and *Good Morning Gloucester*. Thank you to Jane Enos, Ray Lamont, and Joey Ciaramitaro for being always willing to publicize GEF programs and events.





## Gloucester Education Foundation 2011-2012 Contributors

### GEF Community Leader (\$10,000+)

John & Mollie Byrnes\*  
Anonymous Foundation\*  
The Peter & Elizabeth C. Tower Foundation\*  
Joe & Maggie Rosa\*  
Richard & Anne Rosenfeld  
Marietta Lynch\*  
Cape Ann Savings Bank\*  
The Dusky Foundation\*

### School Sponsor (\$5,000+)

Anonymous  
Kathleen & Kevin Clancy\*

### Grade Sponsor (\$1,000+)

Edward & Shilo Abell\*  
Edward & Mary Anderson  
The Annisquam Exchange  
The Annisquam Sewing Circle\*  
Jan & John Bell\*  
J.J. & Jackie Bell\*  
Bomco, Inc.\*  
The Charles Family Foundation\*  
Charles Crowley & Claire Sanford\*  
Bob & Gigs Cunningham\*  
J. Destino, Inc.\*  
Mary Kay Dyer\*  
Peter Feinstein & Miriam Weinstein\*  
The Galen Gibson Foundation  
Bob Gillis & Pixie Harrington\*  
Otis & Kelly Hendershott\*  
The Jebediah Foundation  
Susan & Charles Kelly\*  
The Kreilick Family Foundation\*  
David & Darlene Lane  
Christopher & Anne Lewis  
The Moore Family Foundation  
Ruth Pino\*  
David Rabin & Heather Atwood  
Rockport National Bank\*  
Margaret & Herbert Ross  
Rotary Club of Gloucester\*  
Ed Shoucair & Kaye-Lynn Johnson-Shoucair\*  
James & Robin Towne\*  
Leora Ulrich\*  
Terry Weber  
James & Theresa Whitmore\*

### Family Sponsor (\$400+)

Again & Again\*  
Judy Avery\*  
BankGloucester\*  
Gregg & Nicola Bach\*  
David & Lida Bernard  
C.B. Fisk, Inc.\*

John & Barbara Cahill\*  
Cape Ann Marketplace, LLC\*  
Jane & John Cunningham  
Peter Dolan & Shelley Morgan\*  
Hilary & James Frye\*  
Roger Garberg & Marion Sibley\*  
George's Coffee Shop\*  
Val & Paul Gilman\*  
Sarah & Jason Grow\*  
Kathy Hamilos\*  
Harbor View Realty Trust\*  
Tom & Martha Hooper\*  
Bob & Pat Jedrey\*  
Stanley Marchant\*  
Christine McGrath & Patrick Salony  
Sean & Erin McKay  
Roger & Carol McNeill\*  
Beth & Dan Morris\*  
Mark & Melanie Murray-Brown\*  
Wendy & John Nasser\*  
Robert & Rachel Perlmutter\*  
David & Denise SanPaolo\*  
Val & Evelyn Somers\*  
Jochem Struppe & Frieda Grotjahn\*  
Rockport Mortgage Company\*  
David Rosen & Laura Harrington\*  
Andrew Rosenberg & Marian Zeles\*  
Bob & Carolyn Stewart\*  
Dick & Barbara Wilson\*  
Robert Wolf\*

### Contributor (up to \$400)

Anonymous Donors (3)  
Jerry & Carol Ackerman\*  
Robert Ackerman, M.D.\*  
Adage Capital Management, L.P.\*  
Suki & Fil Agusti\*  
Ed & Nancy Akerley\*  
American Land Survey Associates\*  
Meredith Anderson  
& Mark Williamson\*  
Eben & Sandy Andrew  
Colleen Apostolos-Marsh  
Harry & Marcia Appt  
John & Katherine Balch  
Tom Balf & Donna Heaney\*  
Bank Of America\*  
Ann Banks  
Lansing & Wendy Banks  
Art Barnett\*  
Karen Barth  
Bass Rocks Golf Club\*  
Dorothy Batchelder  
Leslie Beaulieu\*  
Peter & Karen Bell\*  
David & Sally Benjamin\*  
Peter & Sally Bent

Jonathan & Diane Bevins\*  
Robert & Lynn Bird  
John & Cynthia Bjorlie\*  
Bode Insurance Agency\*  
Hermine Bogin\*  
Nikki Bogin & Charles Olson\*  
Adam Bolonsky  
Tracy Bowen  
Lewis & Mimi Braverman  
Brierneck Association  
Dr. Richard E. Brown  
Shelley Brown  
Shep & Lee Brown\*  
Stephanie & Fred Buck\*  
Brian Buckley & Deborah Faunce  
Mary Burgarella\*  
Tom Burger & Andree Robert\*  
Hugo & Carol Burnham  
Mark & Stephanie Caddle\*  
Maryellen P. Callahan  
Cape Ann Insurance Agency\*  
Margaret Carten & Robert Crosby  
George & Judy Carter\*  
Jim & Judy Caulkett  
Lynne & Robert Cavender  
Guy & Eva Cloutman  
Tom & Sandy Coder  
Harold & Virginia Cogger\*  
Gloria Cohen\*  
Paul Cole & Judith Nast  
Hugh & Joan Collier\*  
Richard & Caroline Connolly  
Roger Corbin & Liz Serpa\*  
Barry Corden\*  
Fred Cowan & Dr. Richard Gardner  
Karen Cunha  
Cunningham & Cunningham\*  
Anthony & Janice Curcuro\*  
Philip & Mary-Alice Curcuro\*  
Natalie Daley  
Donna Davis\*  
Jack & Betty Davis  
William & Nancy Davis  
Charles & Alisa De Gaspe Beaubien\*  
Greg & Nissa Delaney\*  
Martin & Michele Del Vecchio\*  
Holly DeBlois  
Charlesanna Detra\*  
Steve & Dawn Dexter\*  
John Donahue\*  
John & Judy Doyle\*  
Barbara & Paul Dundin  
Stephanie East  
Debbie & Bill Ebeling  
Elite Nails\*  
Kay & Tom Ellis\*  
Rob & Surrey Elwell\*  
Adele Ervin\*

Jay & Helen Featherstone\*  
Susie Field & Bob Heineman\*  
Adrienne Filipazzo  
Guy & Andrea Fincke\*  
Hollis French II\*  
Terry & Elizabeth French  
Robert & Germaine Fritz  
Marion Frost\*  
Jane Gagliardi\*  
John S. Gale, M.D.\*  
Justin Gale  
Janet Garrison  
Gretchen Golden  
Lucile Gatchell\*  
Jonas Gavelis & Bonnie Sylvester  
Timothy & Celeste Geary\*  
Thomas & Dawn Glenn  
Geoffrey H. Richon Co., Inc.\*  
Jennifer Gillis  
Peter & Sabrina Giordano  
Kathryn & Russell Glenn\*  
Thomas & Dawn Glenn  
Curtis Gollrad & Dale Brown\*  
Geoffrey Gordon & Therese Sellers\*  
Nat & Jodi Gorton  
Gorton's Seafood Matching Grants\*  
Paul & Gretchen Goss\*  
Jerry & Pattie Goulart\*  
Peter & Beth Gray  
James & Helen Greeley  
Sarah Green\*  
Marcia Greenbaum\*  
Rick & Jean Grobe\*  
Anthony Gross & Abbie Lundberg\*  
Carl & Judy Gustin\*  
John Harrington & Deb Marston  
Michele & David Harrison  
Dr. Edward Hart  
& Ms. Anita Robboy\*  
Margaret Harvey  
Peter & Laura Hayden  
Martin & Catherine Hertl  
Arlene Hill & Bill Wells\*  
Harry & Mary Hintlian\*  
Ann Hochberg  
& Howard Weinstein\*  
Hilarie Holdsworth  
Scott & Diane Horne  
Caroline & Tom Hovey  
Lisa Howe & Elizabeth Regan\*  
J. Michael Faherty Law Office\*  
Wendy Jackson  
Jalapeños\*  
Mark & Jane Jenkins  
Fred & Deanie Johnson\*  
Miranda & Carl Johnson\*  
Steve & Herbie Johnson  
Ann-Marie Jordan

Eileen Kelley & Tim Blakeley\*  
 Karen Kenny & Dr. Philip Chase\*  
 John & Erica Keyes  
 Mary Ann Kilman  
 Clifford King & Catherine Ryan  
 Debi & Ed King\*  
 Richard & Helen Kluck\*  
 Knome, Inc.♦  
 Peter & Karen Koch-Weser\*  
 Nick Kopanon  
 Bob & Cheryl Kozub  
 Norma Tarr  
 Ann Lane\*  
 Peter & Pam Lane  
 Tom & Grace Lattof\*  
 Milt & Helen Lauenstein\*  
 Ellen & Edward Leaman  
 Nancy & Mike Leavitt\*  
 Gary & Stevie LeDuc\*  
 David & Margaret Leeco\*  
 E.J. Lefavour  
 Gloria Leone & Margaret Benedict  
 Lara Lepionka & Stevens Brosnihan  
 Scott & Arlene Lesch  
 Lisa & Scott LeVasseur\*  
 Monty Lewis & Camilla MacFadyen\*  
 Jackie & Paul Littlefield\*  
 Maria Lovett  
 Marianne Lufkin\*  
 Dana & Clare MacDonald\*  
 Victor & Harriet Maffei\*  
 Karen & Thomas Mailey\*  
 Anne Marchand\*  
 Adah Marker\*  
 Tom Markham  
 David & Louise Marsh\*  
 Connie Mason\*  
 Roy & Shelagh McCauley\*  
 Dan & Jenifer McDougall  
 John & Aria McElhenny  
 Paul & Catherine McGear  
 Dennis McGurk\*  
 Sharon & George McWilliam  
 MCZM♦  
 Royce & Gertrude Miller\*  
 Ken & Robyn Mills\*  
 Barry Moir & Laila Goodman\*  
 Catherine M. Morrissey  
 David Moss  
 Sean & Colleen Murdock\*

Evelyn Murphy  
 Grace Murray\*  
 Carol Nardone\*  
 Stevie & Greg Neal\*  
 Wayne & Keri Nelson  
 Betty & Sam Nicastro\*  
 E. Joan Nolan  
 Jim & Elsa Nolan  
 Tim & Annette Nolan  
 Grace & Guiseppe Numerosi  
 James & Frances O'Brien\*  
 Terese & Patrick O'Connell  
 Tobey & Fred O'Dea, Jr.\*  
 Jerry & Bonnie O'Neil  
 Ed O'Reilly  
 John O'Toole\*  
 Alicia & Mike Oliver\*  
 Mark & Renee Olson  
 Sherry Olson  
 Jeffery Parsons  
 Kristen Parsons\*  
 Karen Petersen  
 Philpott, Doyle & Co., P.C.♦  
 Jonathan & Susan Pope\*  
 Daniel Poranski  
 & Katherine Dolder  
 Anthony & Erin Porcello  
 Electrical Engineering Dept.,  
 Portsmouth Naval Shipyard  
 Rhonda Pratti & John Harvey  
 Kathleen Purdy\*  
 Stacy Randell  
 Martin & Kay Ray\*  
 Heather Johnson-Reid  
 Joanne Reiss  
 Alexandra Rhineland  
 & Jon Hardy\*  
 David & Annie Rhineland\*  
 Arthur Riaf & Sandra Sabo\*  
 Susan Richardson\*  
 Sunny Robinson & Jeanne Gallo  
 Timothy & Deborah Roman  
 John & Sandy Ronan\*  
 David & Nancy Rose\*  
 Martha & Melvin Rosenblatt\*  
 Carole Ann Ross  
 Stephen Sacca & Janet Ulwick-Sacca\*  
 Louis Sampson\*  
 Schlichte & Johnstone, P.C.\*♦  
 Peter & Grace Scol

Terry Segal & Dale Rosen\*  
 Rule Marine Service, Inc.\*♦  
 John & Maggie Seus\*  
 Robert & Sandra Shea\*  
 Leslee Shlopak  
 Edward & Barbara Silberman\*  
 David & Patricia Slade  
 Allyn & Jeanne Smith\*  
 Laura & Kevin Smith  
 Elaine Smogard\*  
 Sonolite Plastics Corporation\*♦  
 Mary Spittle  
 Michael Stelluto, M.D.\*  
 Bernard M. Sullivan Insurance Agency♦  
 Sunshine Fund, Beeman School  
 Al & Lee Swekla\*  
 Lynn & Joan Swigart\*  
 Melissa Teixeira\*  
 Norma Tarr  
 Sefatia Romeo Theken\*  
 Sue Todd  
 Tom's Auto Center, Inc.\*♦  
 Shayne Trubisz  
 Jacqueline & Tom Underwood  
 Vicki Vadala  
 Greg Verga\*  
 Robert & Marlene Victorine  
 Hazel von Rosenvigne  
 Edward & Shirley Wade\*  
 George & Joan Waterhouse\*  
 James & Lea Watson\*  
 Heidi Weller  
 David & Lisa Wheeler  
 Michael & Candace Wheeler\*  
 Frederick & Priscilla White  
 Charles & Patricia Whitlock\*  
 Betsey Williams  
 Windhover Development, Inc.♦  
 Wolf Hill Landscaping & Supply, Inc.♦  
 Wayne & Glenda Zink

\* "Star" donors have supported  
 GEF for three or more years.

♦ Business donors

Report includes donations received  
 April 1, 2011 - March 31, 2012.

### Memorial gifts were thoughtfully made by family and friends of:

Angeline Ceppetelli, William E. Campbell, Jr., Rosaria Favazza, Wilfred J. Gouzie, and Denise SanPaolo.

### Gifts were made in honor of:

Bob Cunningham, Norm Graham, Jason Grow, and Joe Rosa.

### GEF recognizes the following artists for their participation in the *Alchemy of the Arts* series

Kurt Ankeny  
 Nubar Alexanian  
 Alexis Chipperini •  
 Baraka Berger  
 Tyler Devlin •  
 Tsar Fedorsky  
 EJ LeFavour  
 Zoe Morris •  
 Carleen Muniz  
 Debra Bretton  
 Robinson  
 Michael Storella  
 Patti Sullivan  
 Julia Verga •  
 Chris Wood

• GHS student

### GEF recognizes the following organizations for their generous in-kind donations.

Alchemy Restaurant•  
 The Cricket Press, Inc.♦  
 Generous Gardeners  
 Gloucester Daily Times•  
 Jason Grow  
 Photography•  
 Shaw's Supermarket•  
 Stop & Shop•  
 Temple Ahavat Achim  
 Underwood  
 Photography•

## In Memory of Denise SanPaolo

Denise's untimely passing this past year was very sad for GEF. Denise was dedicated to GEF, serving as a Board member and, most recently, as a member of the Community Council. Last year she sponsored the initiative to purchase JoRide bicycles for elementary school students with special needs. These bikes are designed to increase balance skills, self-confidence and independence. We express our heartfelt sympathies to Denise's husband, children and parents.





Cover art – Gloucester Mural by Veterans' School students, participants in the 2011 Summer Literacy Program.



[www.thinkthebest.org](http://www.thinkthebest.org)

33 Commercial Street  
Gloucester, MA 01930

NON-PROFIT ORG  
US POSTAGE PAID  
GLOUCESTER MA  
PERMIT NO. 17

